



COLLECTION ' 24

GLAZED PORCELAIN TILES
300X300MM (MATT)

Introducing our four collections of matte finish tiles with breathtaking designs, transforming homes into enchanting wonderlands of timeless beauty. Choose your own glorious style.



MOSAIC
COLLECTION

ARTE
COLLECTION

ECLIPSE
COLLECTION

DEKOR
COLLECTION

MOSAIC

COLLECTION

GLAZED PORCELAIN TILES
300X300MM (MATT)

Immerse your home in exceptional charm with our matte finish tile collection, showcasing seven captivating patterns for magnificent beauty and giving an exceptional touch to your home.

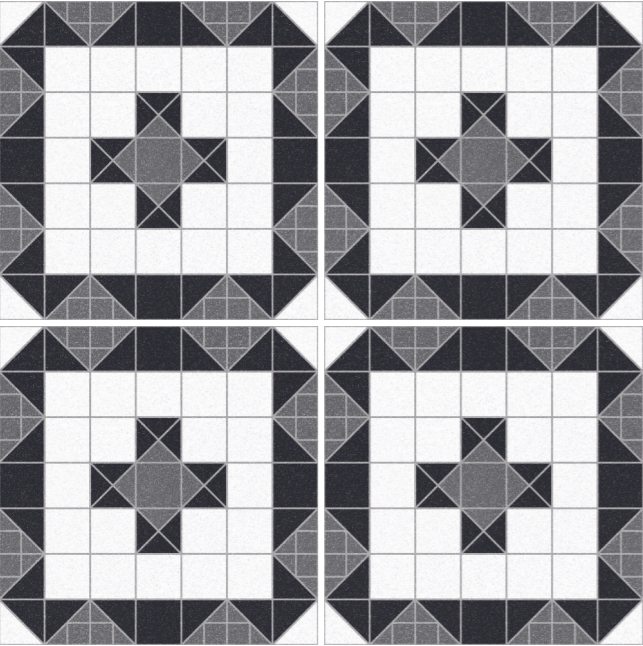


07 PATTERN

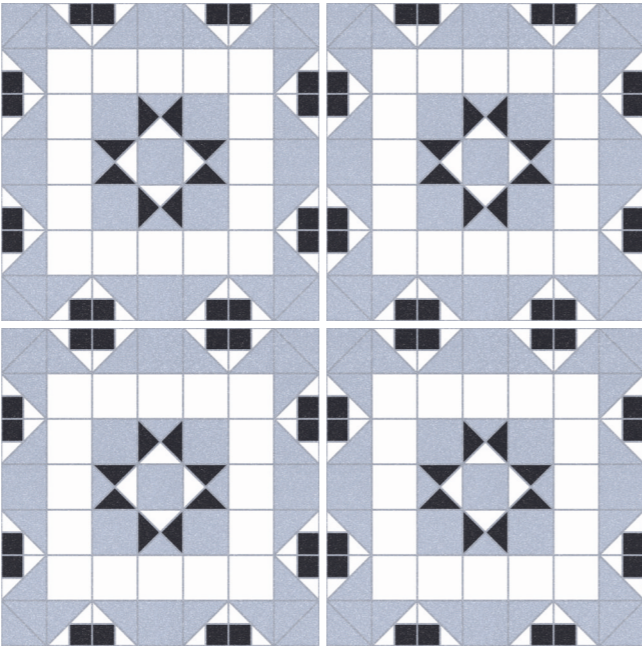
MOSAIC

COLLECTION

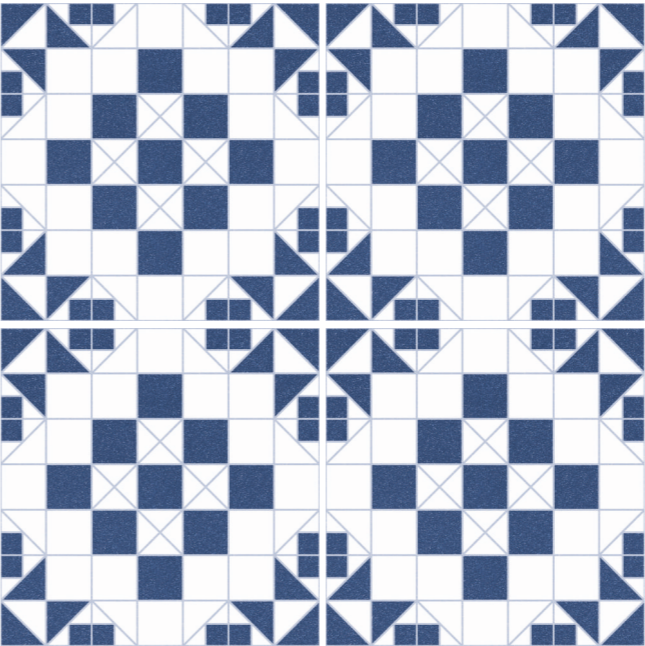
GLAZED PORCELAIN TILES
WITH LOW WATER ABSORTION $E \leq 0.5\%$



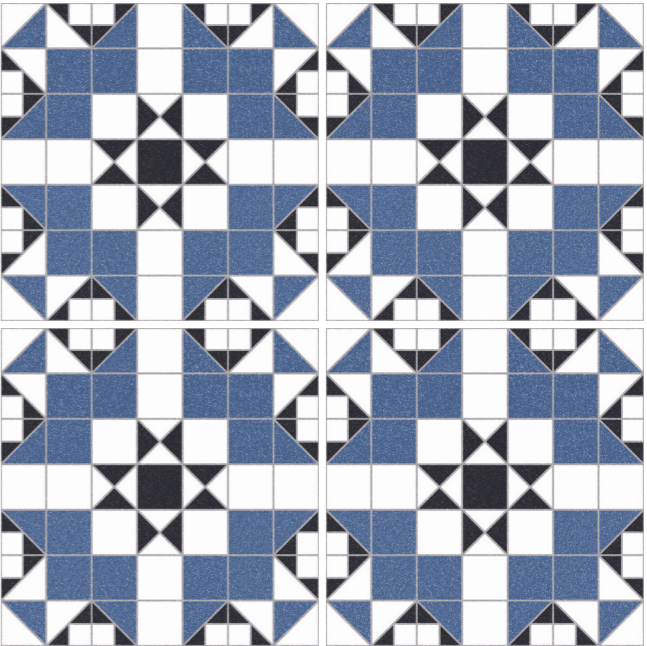
20251 MOSAIC DOMITA



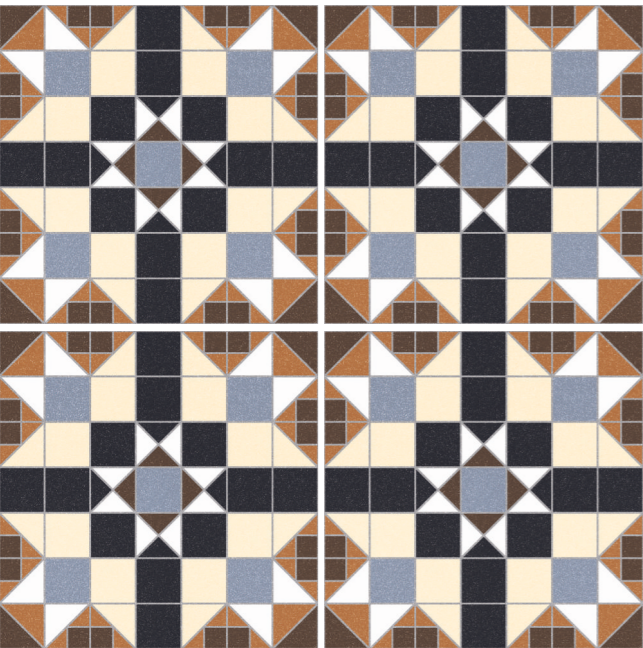
20252 MOSAIC MOCETA



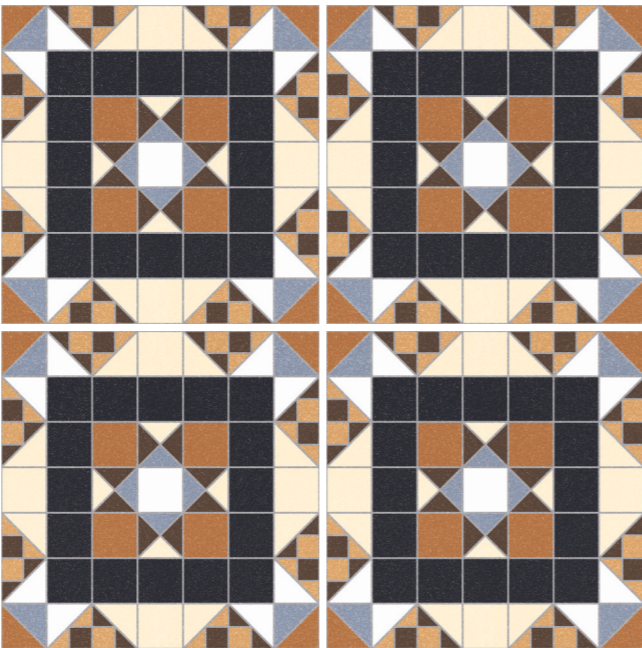
20253 MOSAIC ASCOTA



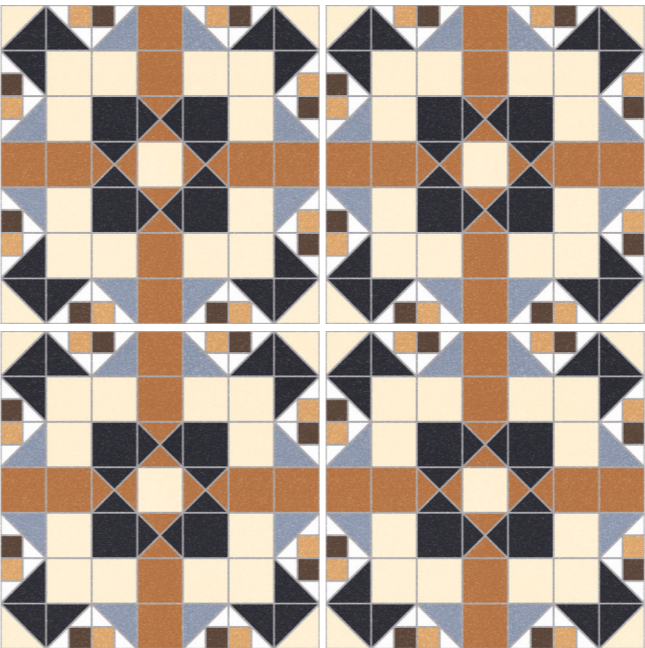
20254 MOSAIC ODETA



20255 MOSAIC BOCETA



20256 MOSAIC MONECA



20257 MOSAIC SOLETA

SIZE.
300X300MM

SURFACE
MATT



WALL
TILE



FLOOR
TILE



20257 MOSAIC SOLETA

ARTE

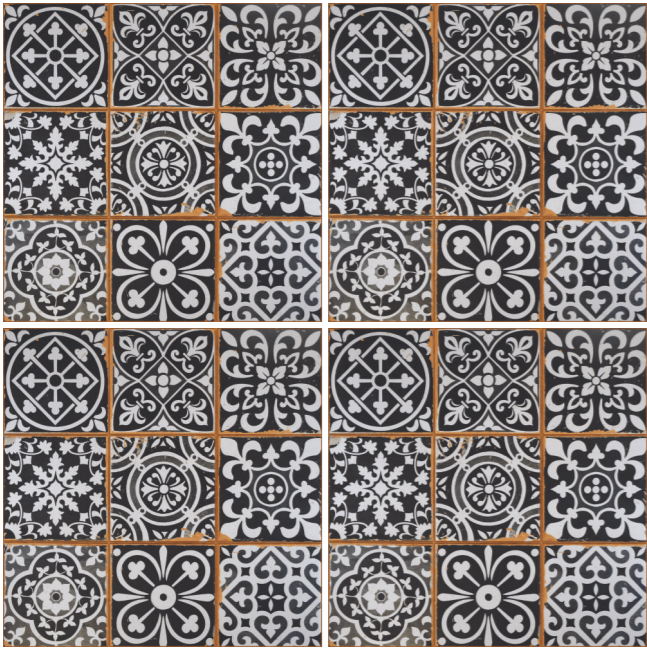
COLLECTION

GLAZED PORCELAIN TILES
300X300MM (MATT)

Experience stunning interiors with our matte finish tile collection, featuring three gorgeous patterns that set a new standard for beauty and amaze everyone.



03 PATTERN



20301 ARTE BLACK



20302 ARTE BLUE



20303 ARTE RUSTICO GRIS





20301 ARTE BLACK

ECLIPSE

COLLECTION

GLAZED PORCELAIN TILES
300X300MM (MATT)

Experience luxury with our matte finish tile collection featuring nine random lavish designs, elevating your home's aesthetic with impressive sophistication.



09 RANDOM

ECLIPSE

COLLECTION

GLAZED PORCELAIN TILES
WITH LOW WATER ABSORTION $E \leq 0.5\%$



20313 ECLIPSE FLOSS

SIZE.
300X300MM

SURFACE
MATT



WALL
TILE



FLOOR
TILE



20313 ECLIPSE FLOSS

DEKOR

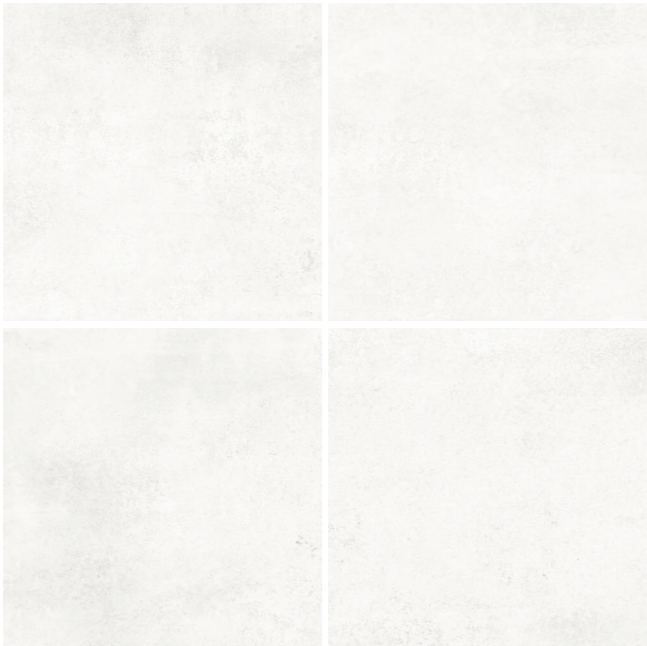
COLLECTION

GLAZED PORCELAIN TILES
300X300MM (MATT)

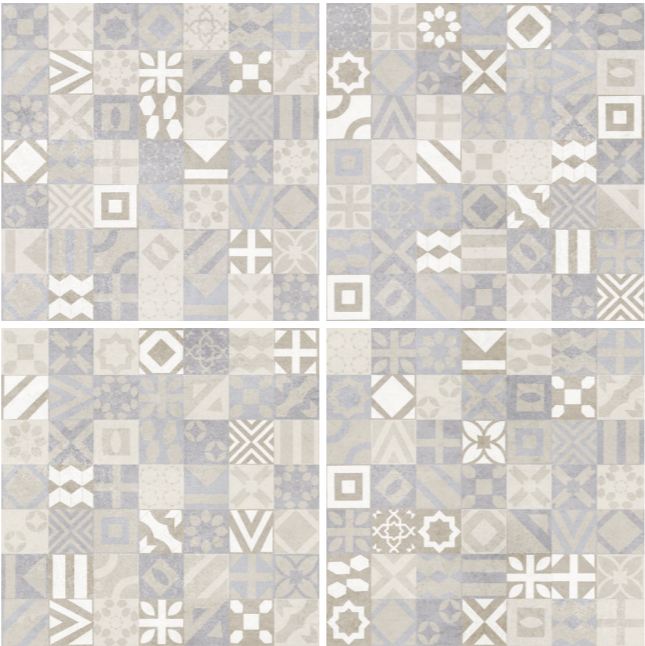
Discover our matte finish tile collection, boasting three fabulous concepts that add a sensational touch of style to any space and adds luxury to your home.



03 CONCEPT



20242 DEKOR LIGHT CREAM



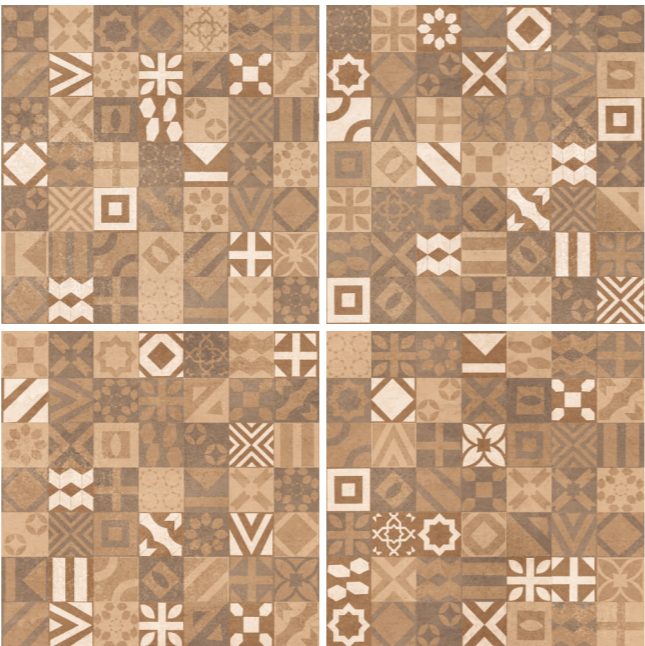
20243 DEKOR HL CREAM



20241 DEKOR DARK CREAM



20245 DEKOR LIGHT BROWN



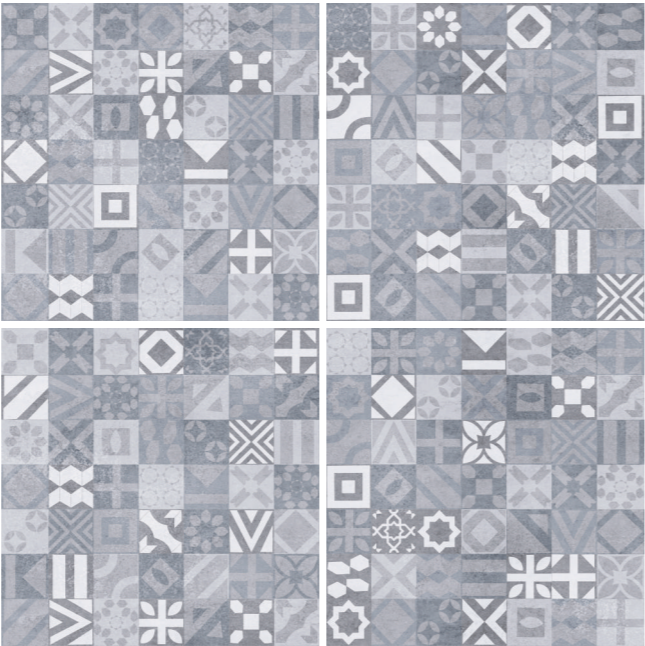
20246 DEKOR HL BROWN



20244 DEKOR DARK BROWN



20248 DEKOR LIGHT GREY



20249 DEKOR HL GREY



20247 DEKOR DARK GREY





20241 DEKOR DARK CREAM
20242 DEKOR LIGHT CREAM
20243 DEKOR HL CREAM

CHARACTERISTICS OF GLAZED PORCELAIN TILES

DRY-PRESSED CERAMIC TILES, WITH LOW WATER ABSORTION 0.5%, ≤
FOR INTERNAL AND EXTERNAL WALLS AND FLOORS

Fire Reaction	Class A1
Breaking Strength	≥ 1300 N
Thermal Shock Resistance	PASS
Durability For:	
Indoor Uses	PASS
Outdoor Uses	PASS
Frost Resistance	PASS
Resistance to Chemical for Household use and Swimming Pool Salts	ISO 10545-13 GA
Resistance to Low Concentrations of Acids and Alkalis	ISO 10545-13 GLA
Resistance to High Concentrations of Acids and Alkalis	ISO 10545-13 GHA
Stain Resistance	ISO 10545-14 Class 5

PACKAGING DETAILS

SIZE	THICKNESS	PIECES/BOX	SQM./BOX	SQFT./BOX	KG/BOX
300X300MM (12"X12")	8.00MM	09	0.81	8.72	14.00

Note :

- Size / shade variation is inherent in porcelain tiles , in case of any complain its should be brought to our dealer’s notice before laying the tiles.
- Colour shown are indicative only. Check actual tiles for exact colour.
- The information contained in this catalogue are accurate as possible, but cannot be considered as legally binding.
- Customers are advised to inspect a sample of the tile before ordering.
- The company reserves the right to change the specifications without prior notice.

Exterior Elevation or interior Walls & Floors



TILE FIXING INSTRUCTIONS

It is necessary to use an appropriate adhesive and grouting material for each product An initial approach must be made before starting the installation and take into account the type of joint, structural, perimeter, expansion and installation that must be used for each use. We advise that to obtain an optimal result a 1.5 mm joint should be used.

Once the placement is finished: it is recommended to remove the remains of adhesive material and specific grouting for each material, following the manufacturer’s instructions for these products.

In general, powder detergents and aggressive scouring pads should not be used for cleaning. It is enough to clean the tiles with a sponge, warm water and a neutral liquid soap. Finally, rinse with clean water.

